



**FEATURES**

- Modular in Nature / Custom Configurable
- Hot Field Swappable
- Individual Isolation with Locking Arrangement
- Versatile Mounting

**BENEFITS**

- No Spurious trips
- Online Maintenance without process interruption
- Local control and/or Remote control
- Valve position indicator with Feedback signal & PST functionality
- High Availability
- Diagnostic Parameters



progressive  
passionate  
Innovative  
technology  
customer centric



Emergency Shutdown System (ESD) is designed to minimize the effects of emergency situations, related to discharge of Hydrocarbons / Hazardous chemical, or outbreak of fire resulting in unplanned shutdown or loss of production. Solenoid Valve in ESD loop plays a major role to vent the actuator to a fail safe state on receipt of signal from ESD controller and/or power failure. Apart from functional safety calculation, it's also important to use application based Solenoid Valve in ESD loop.

Rotex offers range of Solenoid Valve in 3 Port / 5 Port configuration for both direct acting and pilot operation.



**APPLICATIONS**

- Emergency Shutdown Valves / Systems (ESD)
- Critical Control Systems / HIPPS
- Safety Interlocking Systems
- Trip Valve Control Systems (Burner Management)
- Fuel Gas Valve Systems
- Pressure Venting / Isolation Systems
- Safety Trip Shutdown Systems
- Process / Equipment Protection Systems

**SALES**

**ROTEX AUTOMATION LIMITED**  
B/703/704, Western Edge-II,  
Off Western Express Highway,  
Borivali (East), Mumbai-400066  
Ph : +91 22 4211 1444

**ROTEX AUTOMATION EUROPE**  
Bierstraat 117  
3011 XA Rotterdam  
The Netherlands  
Ph : +31-88-5053505

**WORKS**

**ROTEX AUTOMATION LIMITED**  
987/11, GIDC Makarpura,  
Vadodara-390010,  
Gujarat, India.  
Ph : +91 265 6174100

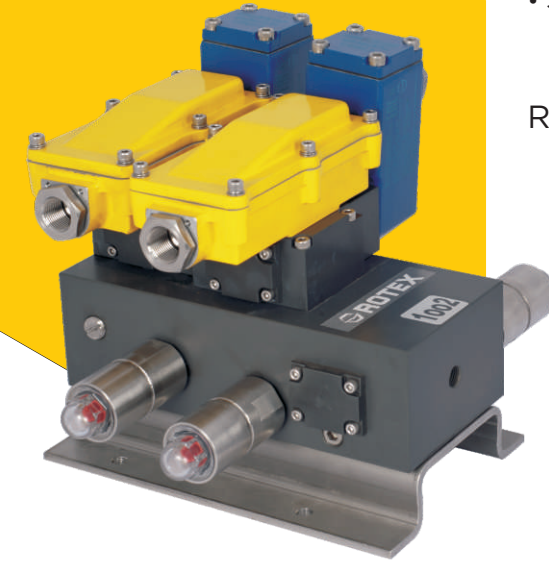
**ROTEX AUTOMATION LIMITED**  
C - 1 B/ 1501, 4 & 5, GIDC  
Vithal Udyognagar-388121,  
Gujarat, India.  
Ph : +91 2692 236224

### Redundant Valve Block - 1oo2

- Modular Redundant Construction
- Solenoid Valve & Actuator Status Indicator
- Termination - Weather Proof / Explosion Proof
- MoC - Aluminium / Stainless Steel
- SIL 3 Capable as per IEC 61508:2010 Parts 1-7

Reliability with **SAFETY** Instrumented

Connection & Working logic for 1oo2		
Channel - 1	Channel - 2	Output
OFF	OFF	OFF
ON	OFF	OFF
OFF	ON	OFF
ON	ON	ON



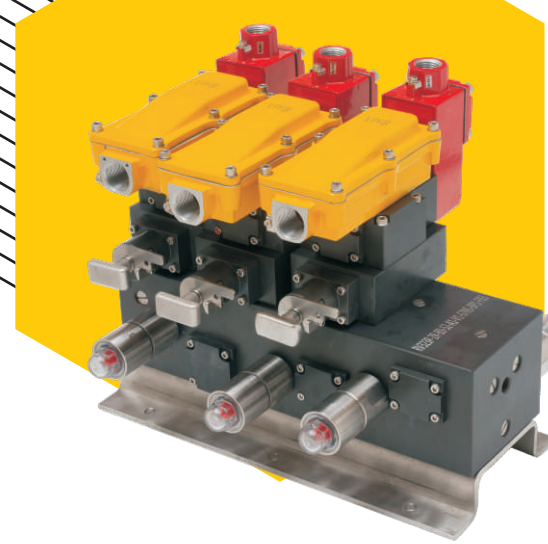
### Redundant Valve Block with Three Solenoid Valve Block - 2oo3

- Triple Redundant Construction
- Manifold Block Solution
- Solenoid Valve & Actuator Status Indicator
- Online Maintenance with By-pass Arrangement
- Online & Offline Diagnostics
- High PFD Value
- Termination - Weather Proof / Explosion Proof
- MoC - Aluminium / Stainless Steel
- SIL 3 Capable as per IEC 61508:2010 Parts 1-7

PATENT PENDING

Reliability with **AVAILABILITY** and **SAFETY** Instrumented

Connection & Working logic for 2oo3			
Channel - 1	Channel - 2	Channel - 3	Output
OFF	OFF	OFF	OFF
ON	OFF	OFF	OFF
OFF	ON	OFF	OFF
OFF	OFF	ON	OFF
ON	ON	OFF	ON
OFF	ON	ON	ON
ON	OFF	ON	ON
ON	ON	ON	ON



### SELECTION GUIDE

Parameters for selection of Redundant Valve Block

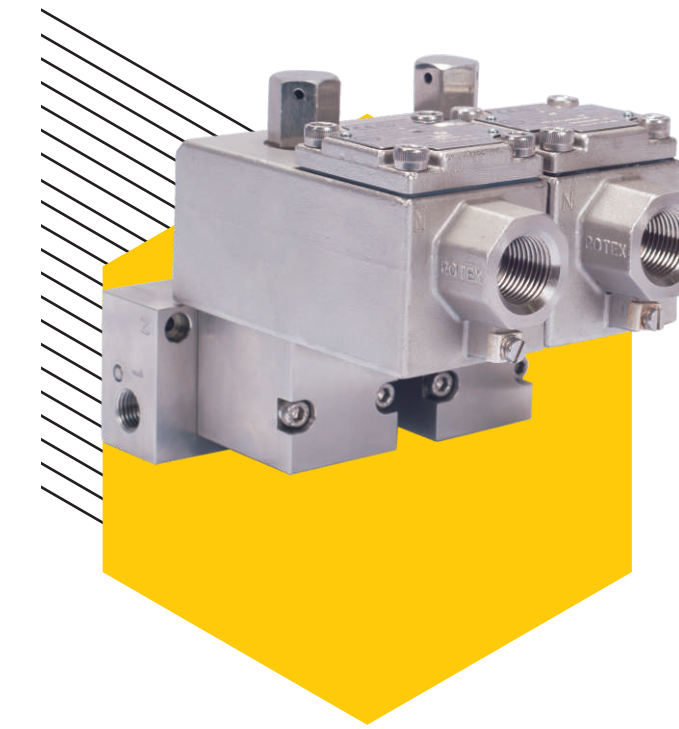
Type	1oo2 / 2oo2 / 2oo3 / 3oo4
Type of Actuator	Single Acting / Double Acting
Common Bypass / Individual Isolation Valve	With or with out control room feedback
Individual SOV Position Feedback	<ul style="list-style-type: none"> <li>• With local indicator (Pneumatic Visual indication)</li> <li>• Control Room feedback</li> <li>• Local indicator and control room feedback (Reed Switch)</li> </ul>
Mounting	<ul style="list-style-type: none"> <li>• Base Plate with Canopy</li> <li>• CRCA Panel box</li> <li>• SS Panel box</li> </ul>
Panel Box	<ul style="list-style-type: none"> <li>• Weather Proof Terminal Box</li> <li>• Ex Proof junction box</li> </ul>
Port Connection	<ul style="list-style-type: none"> <li>• 1/4"- BSP(F) / NPT(F) with 8mm orifice</li> <li>• 1/2"- BSP(F) / NPT(F) with 15mm orifice</li> </ul>
Material of Construction - Wetted Parts	Aluminium Hard Anodised / SS316L
Material of Construction - Solenoid	Die Cast Aluminium / Cast SS
Solenoid Insulation	Class H
Solenoid Enclosure	Ex Proof / Intrinsically Safe
Supply Voltage	230VAC / 110VAC / 24VDC
Optional Features	<ul style="list-style-type: none"> <li>• LED on Solenoid</li> </ul>
Approval for Solenoid *	<ul style="list-style-type: none"> <li>• PESO</li> <li>• ATEX</li> <li>• Cu-TR</li> <li>• INMETRO</li> </ul>

\* - ATEX Approval for Position Feedback Solenoid under progress

Standard Specifications :

Function : 3/2, Normally Closed (or) 5/2  
 Medium : Filtered Compressed Air, Inert Gas  
 Media Pressure : 1 to 10 bar  
 Seal : Viton  
 Media Temperature : -40 °C to + 80 °C  
 Environment protection : IP 67  
 Qualification : SIL 3

For other specifications, Please contact ROTEX



### 3 Port Redundant Solenoid Valve

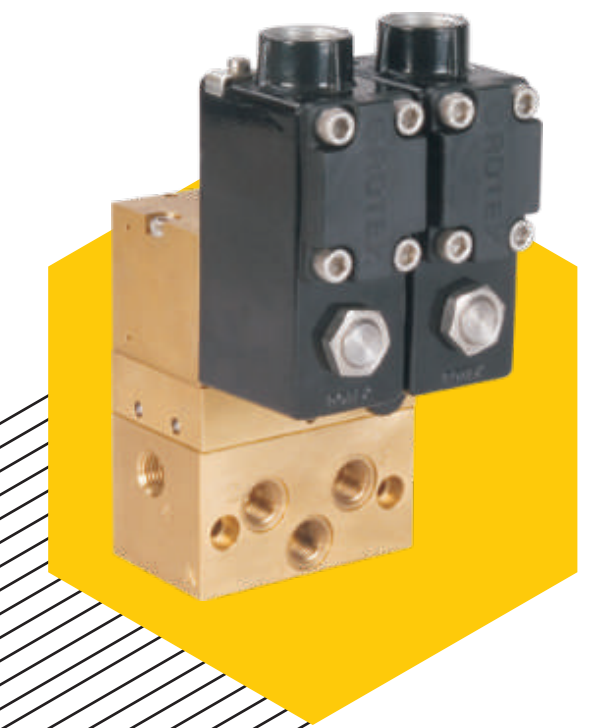
- Two Direct Acting SOV's in Redundant Configuration
- Special Manifold - Maximum Flow and Ease of Maintenance
- Zero Internal Leakages
- Solenoid Power Consumption - 1.8 W / 3.5 W / 8 W / 15 W
- Orifice - 5 mm / 10 mm
- Operating Pressure upto 16 bar
- Termination - Intrinsically Safe (Ex ia) / Explosion Proof (Ex d) Weather Proof
- MoC - Aluminium / Brass / Stainless Steel
- SIL 3 Capable as per IEC 61508:2010 Parts 1-7

Single Acting Actuators

### 5 Port Redundant Solenoid Valve with Redundant Operator

- 5/2 SOV with Redundant Operator
- Zero Internal Leakages
- Orifice - 6 mm / 10 mm / 16 mm
- Operating Pressure upto 80 bar
- Termination - Explosion Proof (Ex d) / Weather Proof
- MoC - Aluminium / Brass / Stainless Steel

Double Acting Actuators

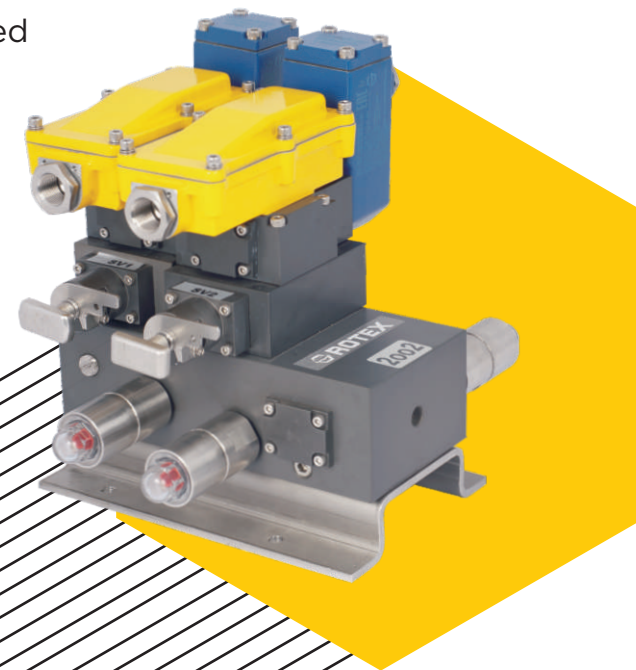


### Redundant Valve Block -2oo2

- Modular Redundant Construction
- Solenoid Valve & Actuator Status Indicator
- High PFD Value
- Online Maintenance with By- pass Arrangement
- Termination - Weather Proof / Explosion Proof
- MoC - Aluminium / Stainless Steel
- SIL 3 Capable as per IEC 61508:2010 Parts 1-7

Reliability with **AVAILABILITY** Instrumented

Connection & Working logic for 2oo2		
Channel - 1	Channel - 2	Output
OFF	OFF	OFF
OFF	ON	ON
ON	OFF	ON
ON	ON	ON



### Redundant Valve Block - 2oo3 / 3oo4

- Triple Redundant Construction
- Manifold Block Solution
- Solenoid Valve & Actuator Status Indicator
- Online Maintenance / Replacement of SOV with By-pass Arrangement
- Online & Offline Diagnostics
- High PFD Value
- Termination - Weather Proof / Explosion Proof
- MoC - Aluminium / Stainless Steel
- SIL 3 Capable as per IEC 61508:2010 Parts 1-7
- Can be configured as 3oo4

Reliability with **AVAILABILITY** and **SAFETY** Instrumented

Connection & Working logic for 2oo3				
Channel - 1	Channel - 2	Channel - 3	Output	
SOV 1	SOV 2	SOV 3	SOV 4	
OFF	OFF	OFF	OFF	OFF
ON	ON	OFF	OFF	OFF
OFF	OFF	ON	OFF	OFF
OFF	OFF	OFF	ON	OFF
OFF	OFF	ON	ON	ON
ON	ON	OFF	ON	ON
ON	ON	ON	OFF	ON
ON	ON	ON	ON	ON

