

E C1E Line Pipe Valve 5CB

5 000 psig / Max Cv 14 / Max Bean Size 58

VALVE SPECIFICATIONS

This control valve uses a bolted bonnet to retain the flow trim in the valve body. Standard end connections range in size from 1" to 2".

Valve Model	C1E Line Pipe
Body Type	Inline
Body Rating	5 000 PSIG (Maximum C.W.P.)
Inlet Connection	see 'Standard End Connections'
Outlet Connection	see 'Standard End Connections'
Bonnet Type	Bolted
Body / Bonnet Material	see 'Material Options'
Stem Material	see 'Material Options'
Seal Material	see 'Material Options'
Trim Style	Ported Cage with External Sleeve
Balanced / Unbalanced	Unbalanced
Flow Characteristic	Equal Percentage
Trim Material	see 'Trim Options'
Design Cv	see 'Trim Options'
Leakage Class	Class V (Standard)



TRIM OPTIONS

	Standard Trim Cage & External Sleeve 2 Row / 4 Hole	Multistage Trim	High-Pressure Multi-stage Trim
Material	UNS S17400, Stellite, Tungsten Carbide	Stellite, Tungsten Carbide	Stellite, Tungsten Carbide
Application	Liquid, Gas, Multiphase; Abrasive	Liquid, Gas, Multiphase	Liquid only
Cv	14	4	3
Turns	6	4	4
Travel	1.00"	0.65"	0.65"

STANDARD END CONNECTIONS

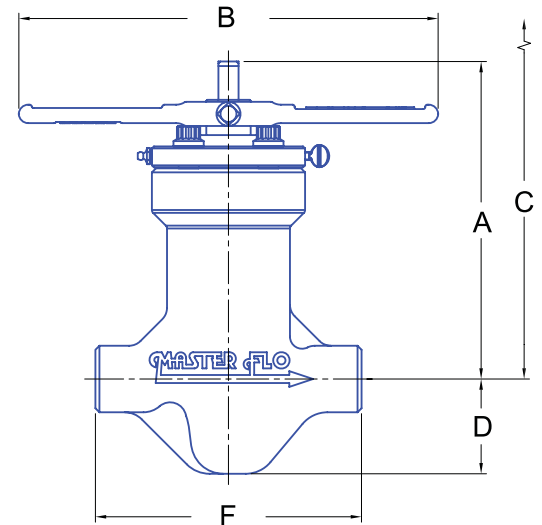
Connection Size ▶	Standard Dimensions & Estimated Weights							
	1" Line Pipe				2" Line Pipe			
	'F'		Weight		'F'		Weight	
Connection Type ▼	inch	mm	lbs.	kg	inch	mm	lbs.	kg
Threaded	8.25	210	30	13.7	11.73	298	46	21

ENVELOPE DIMENSIONS

Dimensions 'A', 'B', and 'C' apply to manually operated valves and are tabulated below. 'F' (face-to-face) dimension depends on the end connection and is tabulated above.

Dimensions		
	inch	mm
A	9.84	250
B	13.00	330
C	15.69	398
D	2.94	75

Note: "C" is the disassembly clearance.



MATERIAL OPTIONS

Temperature Class	Certification Level	API - 6A Material Class Designations			
		AA	BB	DD	EE
PU -20F to 250F	STD / PSL-1	BB	BB	EE	EE
	PSL-2	EE	EE	EE	EE
	PSL-3	EE	EE	EE	EE
LU -50F to 250F	STD / PSL-1	EE	EE	EE	EE
	PSL-2	EE	EE	EE	EE
	PSL-3	EE	EE	EE	EE

	BB-General Service	EE-Sour Service
Body	ASTM A487 4C	ASTM A487 4C
Bonnet	ASTM A350 LF2 or AISI 4130	ASTM A350 LF2 or AISI 4130
Stem	UNS S17400	UNS S17400
Bolting	ASTM A320 L7M	ASTM A320 L7M
Retaining Sleeve	ASTM A743 CF8M	ASTM A743 CF8M
Seals	Buna - N	Viton

Other materials available upon request.

OTHER VALVE OPTIONS

	Standard	Optional
Calibration Head / Serial Plaque	Aluminum	Stainless Steel
Outlet Sleeve	-	n/a
Body Bleed Port	-	n/a

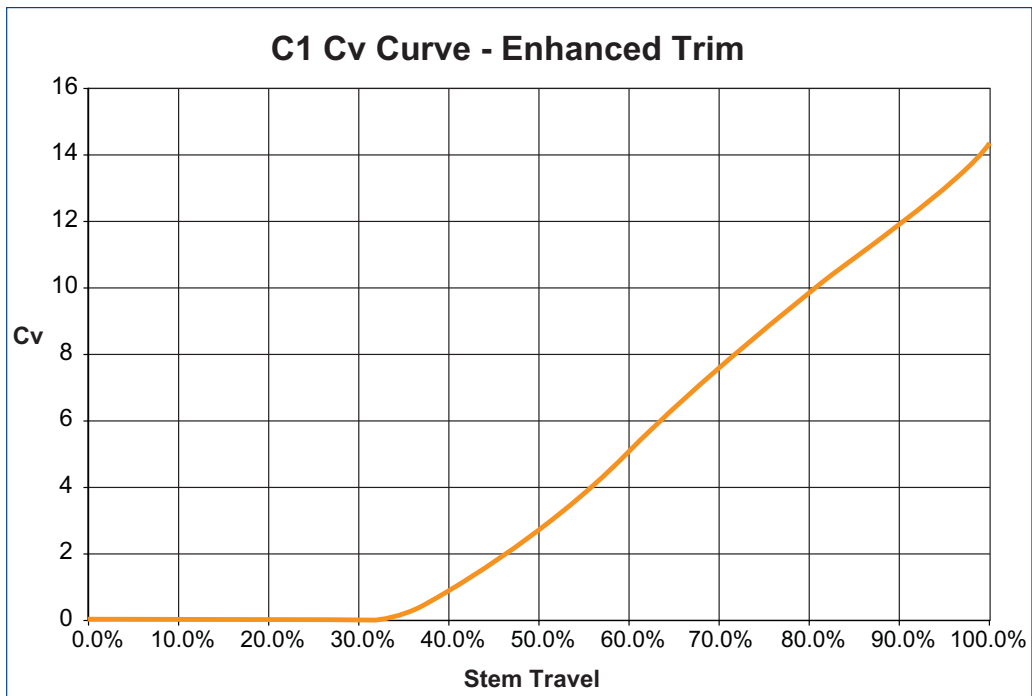
Some limitations may apply.

ACTUATION OPTIONS

Master Flo	Other
Manually Operated	Rotary Electric
FC Hydraulic Piston	Pneumatic Diaphragm
Pneumatic Piston	Pneumatic Piston

Other actuators available upon request.

PERFORMANCE CHARACTERISTICS



LIQUID PRESSURE RECOVERY FACTOR (FL)

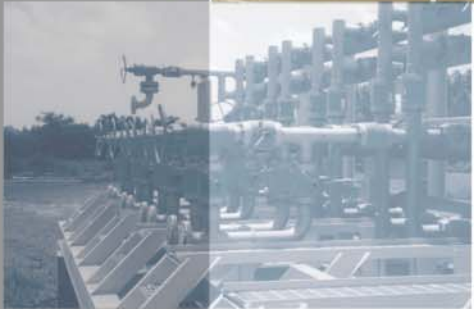
Master Flo's trim geometry has been designed to achieve high F_L numbers. This results in a decreased cavitation potential, lower noise generation, increased flow capacity, and longer trim life. The high F_L numbers of Master Flo's trims have been verified experimentally as per the test procedures of ISA-S75.02-1996.

chokes
for all applications

recycle lines



vent valves



manifold



production



blow down

overboard dumps



level controllers

glycol injection



subsea

water injection



www.masterflo.com
info@masterflo.com
info@masterflo.co.uk