



ENGINEERED  
PRODUCTS  
& SERVICES

**E.P.&S.**

**Your Valve Specialist in Africa**

**Distributor in Western and Central Africa**

for GROTH valves, CDC rupture discs, MASTER FLO, KSB AMRI and MT GROUP

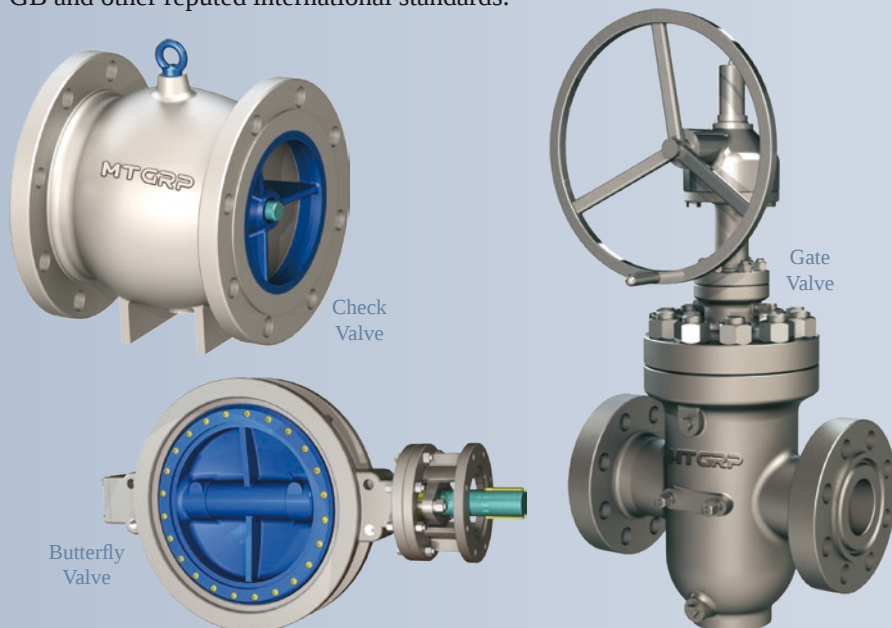


# MT GROUP

## Ball, Gate, Globe, Plug and Check Valves

**MT GROUP** founded in 2003, is an accomplished flow control solutions provider with extensive experience of supplying industrial valves to energy majors for their projects and plants globally.

Leading products include ball valves, gate valves, globe valves, check valves, plug valves and butterfly valves, which are widely used in the oil, gas, chemical industry, power station, offshore, and water treatment, as well as various other industrial systems. Product size ranges from 1/2 to 72 inches and pressure class ranges from Class150 to 2500 and comply with API, ASME, ANSI, DIN, ISO, GB and other reputed international standards.



### Need a valve - fast?

For ten years, **E.P.&S.** has become *Your Valve Specialist* in Africa. During that time and we have found out the importance of getting stock valves to our customers as quickly as possible. **E.P.&S.** now holds our own stock of API6D ball valves at our dedicated warehouse in Belgium. A location specifically chosen to facilitate quick & easy shipping to our clients. All valves come complete with offshore painting, so are ready to be shipped and installed in the quickest time possible!



If **E.P.&S.** doesn't have the valve you require in our stock in Belgium, then allow us to use our extensive knowledge of the Global stock valve market to find you the right solution! Contact us and one of our sales team members will assist you!





# GROTH® Corp. Equipment for Tank Protection

## CDC® Rupture Discs

GROTH® Corporation Pressure/Vacuum Relief Valves, Pressure Relief Valves, Vacuum Relief Valves, Pilot Operated Valves, Flame and Detonation Arresters, Emergency Relief Valves, Waste Gas Burners, Pressure Regulators and more have been protecting refineries, chemical processing plants and facilities with atmospheric, fixed-roof storage tanks for more than 50 years.



Flame arrester



Detonation arrester



Pressure vacuum relief Valve



Emergency vent



Sanitary discs holder



Double discs holder with gauge



Disc holder



Rupture disc



Discs holder

Since 1965, CDC® (Continental Disc Corporation) is a leading manufacturer of rupture disc (bursting disc) devices for a variety of process industries, including chemical, petrochemical, petroleum refining, pharmaceutical, beverage, food and dairy, aerospace, gases, electronics, and other markets worldwide.

CDC Rupture Discs function as a pre-designed "weak point" in a pressurized system, and are the strongest part of your pressure protection system. This rupture discs utilize innovative, patented designs, the highest quality materials and ISO 9001 manufacturing procedures performed by skilled craftsmen.

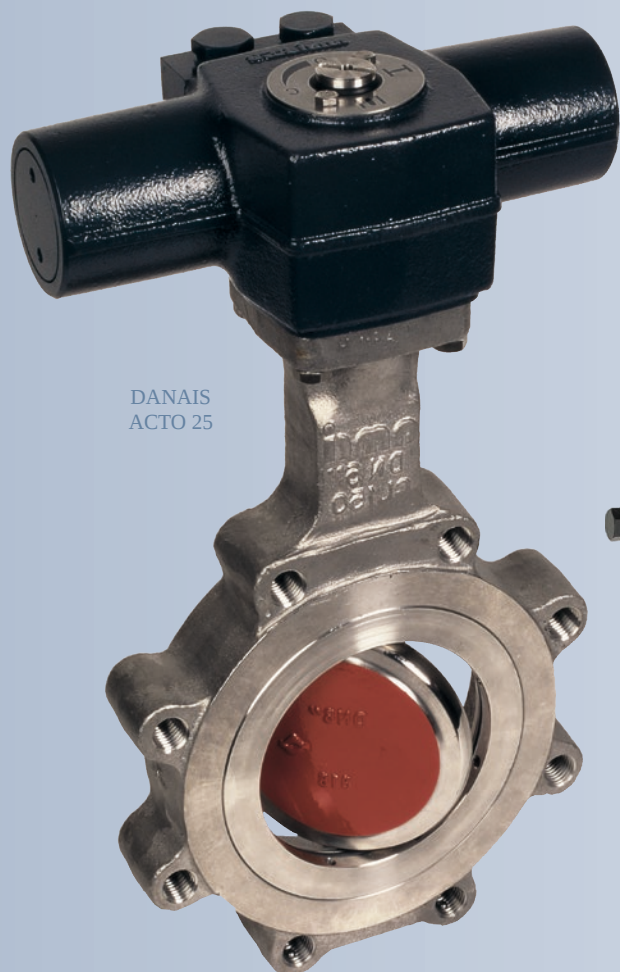


# KSB/AMRI Butterfly Valves

**KSB** is a German company, and have been manufacturing valves for decades. Today, the company with more than 100 years of experience is present in 100 countries, employs 16 000 staff and provides aftersales services to all the end users through a network of 160 service centers around the world.

**KSB** portfolio includes:

- Gate, Globe, Check and Ball Valves
- Strainers
- Diaphragm Valves
- AMRI Butterfly Valves:
  - Centred disk butterfly Valves (**ISORIA**)
  - Eccentric disk butterfly Valves (**DANAIS**)
- Gears, pneumatic/electric Actuators and associated instruments



DANAIS  
ACTO 25



DANAIS  
KALT 2



ISORIA  
DN200



ISORIA 20 T4  
DN100

**KSB** have appointed **E.P.&S.** to be your local partner for their Butterfly (AMRI), Gate, Globe, Check, Ball Valves for Western & Central Africa. **E.P.&S.** will be your focal point for supporting all your technical & commercial needs including:

- Product technical support
- Quotations for valves & spare parts
- Assistance with replacing other brands with **KSB** products
- Management of obsolete products





# MASTER FLO™

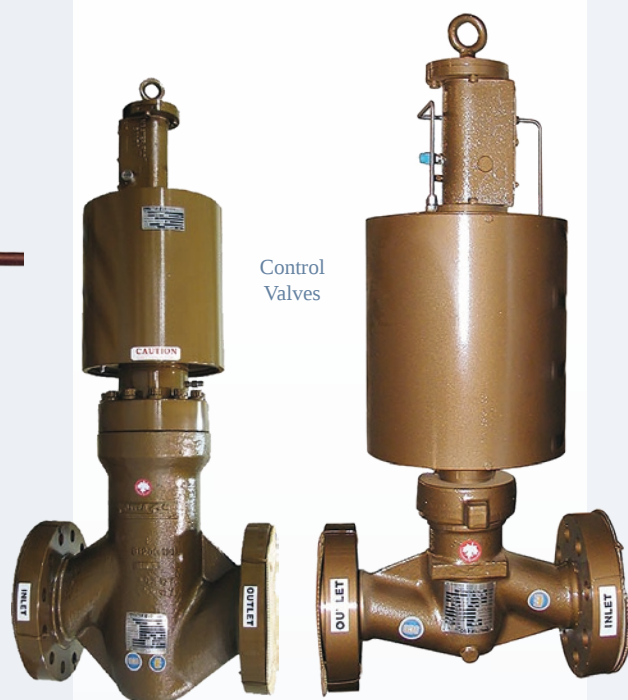
## Choke and Control Valves

**Master Flo Valve Inc.** provides surface and subsea flow management solutions for the global oil and gas industry. Our customers rely on their choke valves, control valves, actuation, and automation and communication solutions, along with their expertise and worldwide support, to lower cost and optimize production through reliable flow for the life of their fields.

The company was established in 1979, and their goal has always been to provide the products, services and solutions that the customers need to effectively manage flow. A network of sales and service centers is strategically located around the globe to support your local operations, wherever you are.



Choke  
Valves



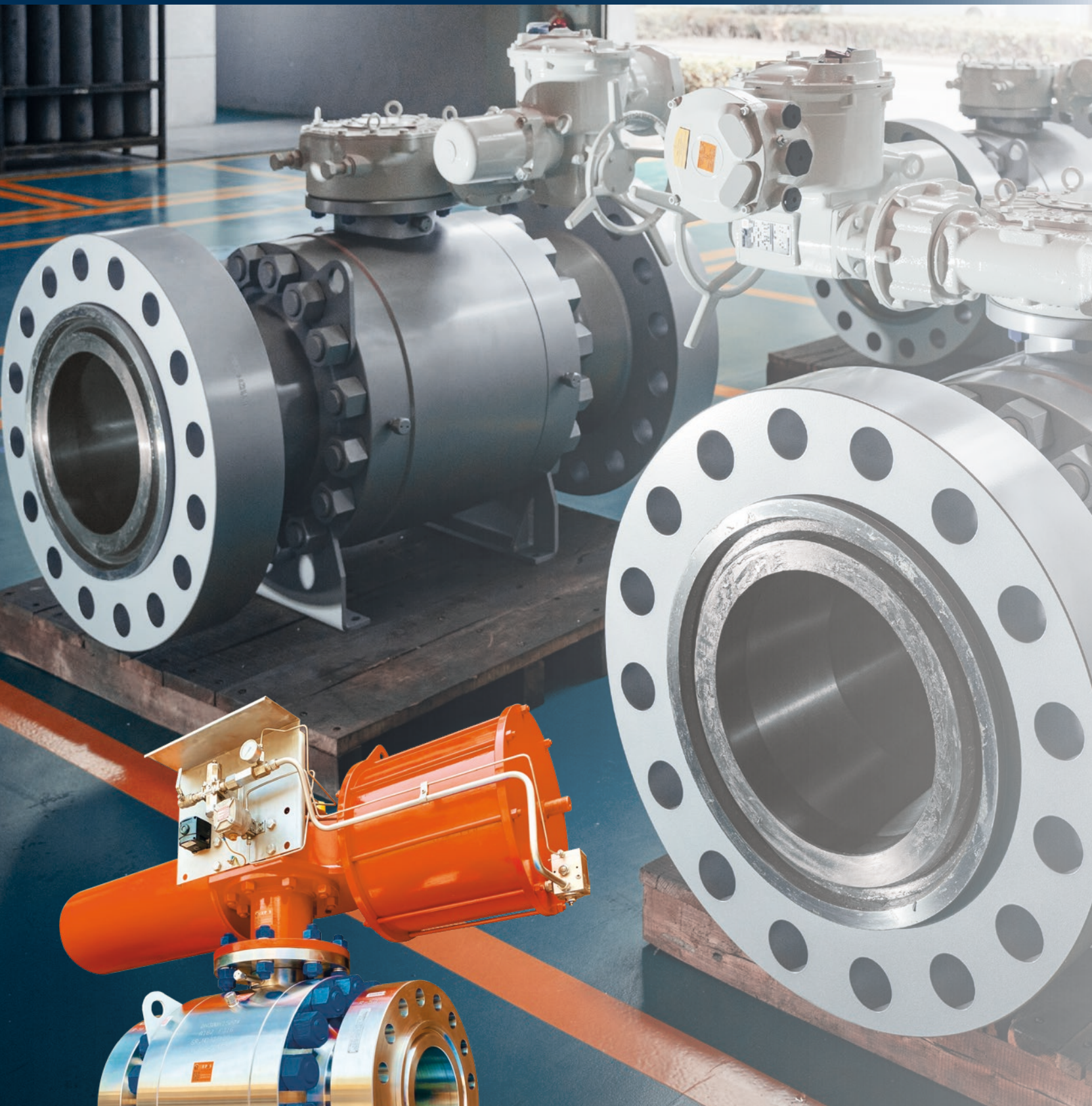
Control  
Valves

**Master Flo's** dedicated Engineering and Research and Development teams set the standard for advancement of choke valve technology and products. That's why the global surface and subsea oil and gas industry turns to **Master Flo** technologies, products and solutions for severe service applications and other situations in which reliable flow is critical. Our ongoing Research and Development has advanced choke valve design to enhance our already impressive erosion resistance, developed proprietary new materials for erosive and corrosive service, and lowered costs with proprietary **Master Flo** technologies that make choke valves easier to inspect and maintain in the field.





# E.P.&S. *References*



◀ 12" Full Bore ESDV  
Hydraulically Actuated  
Pressure Class #1500  
Body Material: Forged  
Stainless Steel (A182 F316)  
Trim Material: Stainless Steel  
Fast track delivery: 4 weeks



ENGINEERED  
PRODUCTS  
& SERVICES

**E.P.&S.**

**Your Valve Specialist**



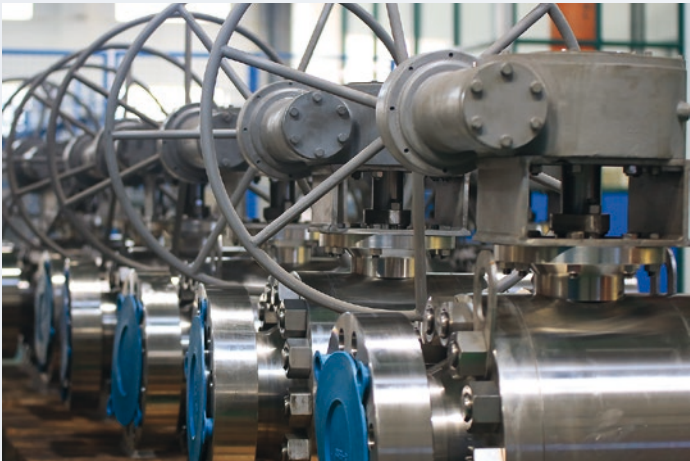




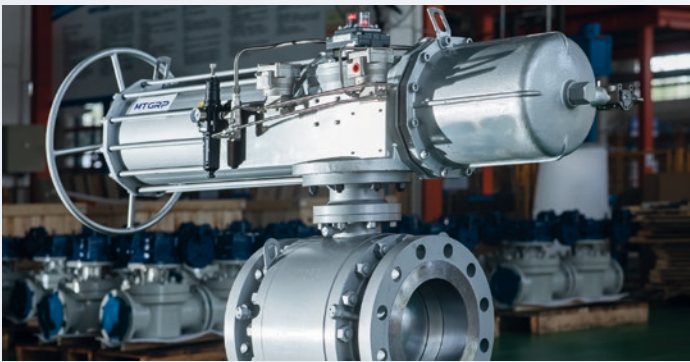
▼ 4" SDV #600



▲ Trunnion Mounted - Reduced Bore - 16"x12" #1500 RTJ



▲ 4" #900 Metal Seated Ball Valves - Full Stainless Steel



▲ 12" SDV #600

▼ 16" SDV #900





# Your Valve Specialist

Leading Brands • **FAST TRACK** • Competitive Prices

**CONTROL VALVES**  
Customized, Fast Track (4 weeks),  
Replacement Parts

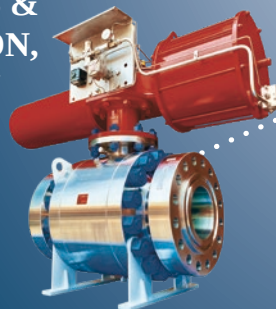
**CHOKE VALVES**  
Customized, Fast Track (4 weeks),  
Replacement Parts

**BALL VALVES**  
Wide Stock,  
Premium Quality, API6D,  
European or US standards

**API6A**  
Wellhead Valves  
and Solutions



**ACTUATORS & AUTOMATION,**  
**SDV, ESDV**  
Spare Parts,  
Customized,  
Fast track,  
Control Panels



**GATE  
GLOBE  
CHECK  
VALVES**  
Wide Stock,  
Premium Quality,  
API6D, European  
or US standards

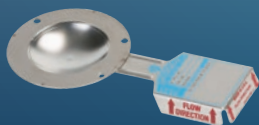


**BUTTERFLY  
VALVES**  
Wide Stock,  
Premium Quality,  
API6D,  
European or US  
standards



## OTHER PRODUCT RANGES

**RUPTURE DISCS**  
Customized,  
World Leader,  
Safety



**TANK PROTECTION**  
No Risk for your  
Critical Assets



**PRESSURE  
SAFETY VALVES**  
Customized, Fast Track,  
Like for Like  
Replacement,  
Package



**REGULATORS**  
Air, Liquid, Gas,  
Customized,  
Like for Like  
Replacement



**SOV & VALVES  
ACCESSORIES**  
Like for Like Replacement,  
Atex Explosion proof,  
Offshore specification  
available



CARRARO

Comptrol Ode

GROTH  
CORPORATION

KSB

amri

MASTER FLO

MT GROUP

NEWAY  
NOE

ROTEX  
Engineering the Future

**Our locations in Africa**  
**SENEGAL** Saly  
**ANGOLA** Luanda  
**CAMEROON** Douala

**GSM/WhatsApp**  
+221 782 930 378  
+244 947 887 380  
+237 652 127 095

ventes@fr-eps.com  
logistique@fr-eps.com  
[www.fr-eps.com](http://www.fr-eps.com)



ENGINEERED  
PRODUCTS  
& SERVICES

**E.P.&S.**