

# ON | OFF VALVES

MANUAL VALVES & ACTUATED VALVES

- *Fast Track*
- *Standard Delivery*
- *Stock Availability*



ENGINEERED  
PRODUCTS  
& SERVICES

## E.P.&S.

**Your Valve Specialist in Africa**

**Distributor in Western and Central Africa**  
for MT GROUP On / Off Valves

**MT GROUP**





# E.P.&S. Your Valve Specialist in Africa



**E.P.&S.** was established in 2009 and over the years has become **Your Valve Specialist in Africa**. We specialize in offering tailored valve solutions including fast track or standard lead times – and cater from large valve packages to single valve requirements. We carry our own stock of API6D Ball Valves with offshore painting as standard – all readily available from our warehouse facility, located in Antwerp, Belgium!... *Please see attached Flyer for more details.*

We are specialist valve suppliers of a diverse range of valves including **Manual & Actuated On / Off Valves** (including Emergency Shutdown Valves, Blow Down Valves & Actuated Valves), Control Valves, API 6A Wellhead Valves & Control Panels, Choke Valves, Vibration Analysis Solutions, Rupture Disks & Tank Protection. We can also supply a full range of accessories (actuators, positioners, solenoid valves, gauges, fittings) in support of such equipment, and are able to offer tailor-made solutions for the most challenging applications.

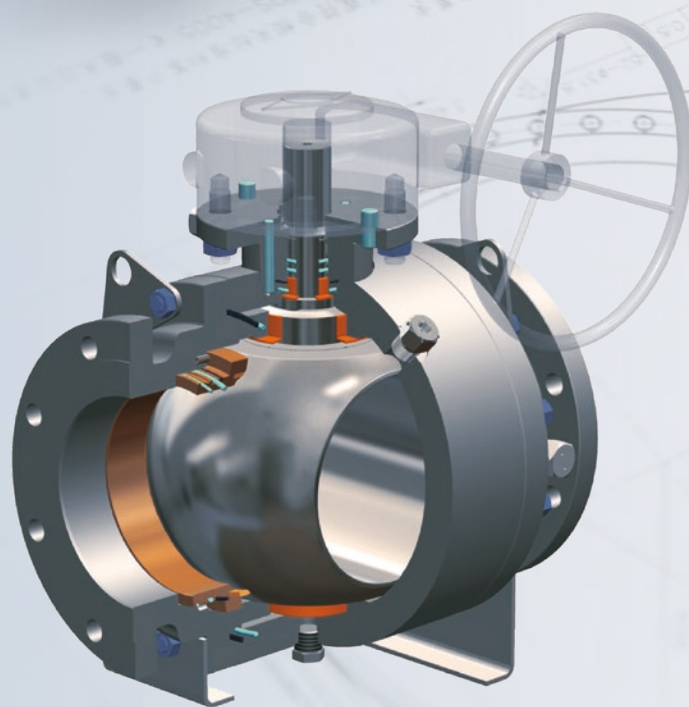
Our customer base is extremely diverse and includes oil and gas (production, refining, storage, distribution), chemical, food and energy companies. Our presence extends from the end users to integrators and installers as well.

**E.P.&S.** is your distributor in Angola, Cameroon, Chad, Congo, Equatorial Guinea, Gabon, Ghana, Guinea Conakry, Ivory Coast, Niger, Senegal, we can offer locally-based technical and commercial support to our customers.

Our reputation rests not only on technical expertise when managing solutions, local knowledge and the supply of quality products, but also on diversity of sourcing, which enables us to meet our customers' specific needs and urgency.

**E.P.&S.** presents you **ON-OFF Valves** from the **MT Group**, it includes : Ball Valves, Gate Valves, Globe Valves, Check Valves, Plug Valves and Butterfly Valves. These valves are widely used in the oil, gas, chemical industry, power station, offshore, and water treatment, as well as various other industrial systems.

Product size ranges from 1/2 to 72 inches and pressure class ranges from Class 150 to 2500. All products are in strict compliance with API, ASME, ANSI, DIN, ISO, GB and other reputed international standards. The factories & Foundries under **MT Group** have all the expected international certifications including: ISO 9001, ISO 14001, ISO 18001, CE, API 6D, API 600, API 607, API 6FA, TS,... *Ensuring you of a quality product.*





# MT Group Valves Quality Control

MT Group's factories are equipped with precise measurement and testing equipment to perform UT, MT, PT, PMI, Impact Test, Tensile test, CMM, High Temperature Test, Cryogenic Test, Low Emission Test, High Pressure Gas Test, Paint Thickness Test, Surface Roughness Test, Hydraulic Test, etc. Entire supply chain management from raw material purchasing until finished goods every process is under control.



PRESSURE  
TEST



TORQUE  
TEST



NONDESTRUCTIVE  
TEST(NDT)



TAT  
TEST



COORDINATE  
MEASURING  
MACHINE



CRYOGENIC  
TEST



HEAT  
TREATMENT  
FURNACE



INDUSTRIAL  
VALVE  
MANUFACTURER



E.P.&S. distributes the leading of MT Group products include Ball Valves, Gate Valves, Globe Valves, Check Valves, Plug Valves and Butterfly Valves, which are widely used in the oil, gas, chemical industry, power station, offshore, and water treatment, as well as various other industrial systems.

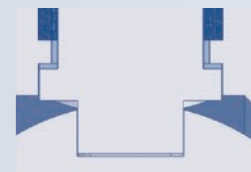


# MT Group Valves *Design Features*



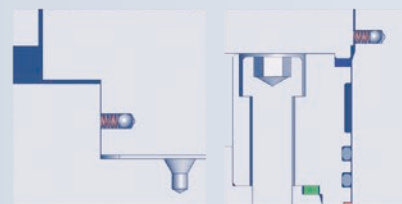
## **ANTI-BLOWOUT STEM DESIGN:**

The overall T-shaped structure at the bottom of the stems or optional pendant collect design can prevent the stem from blowing out under pressure.



## **ANTI-STATIC DEVICE:**

Standard feature of ball valves a spring between the ball and stem or between stem and body permits electrical continuity between all valves components.



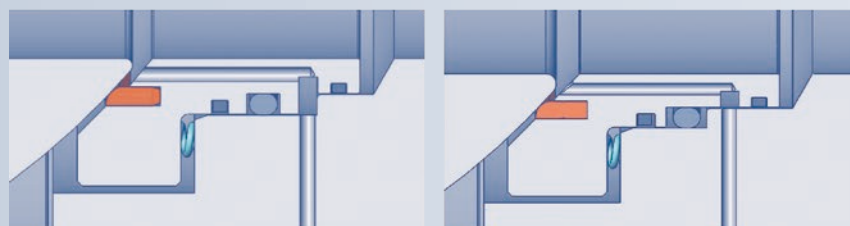
## **FIRE TYPE-TESTING DESIGN:**

The ball valves are designed with a secondary metal-to-metal seal. After a fire the fire-safe seals energize the seat assembly to seal. For floating valves. Ball is pushed to keep touch with fire-safe lip. For trunnion mounted ball valve, seat is pushed to keep touch with ball by line pressure with spring force.



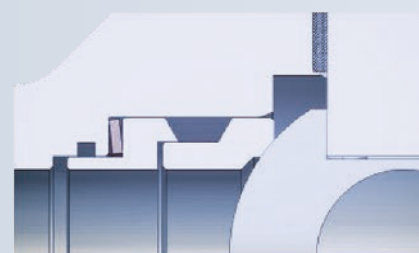
## **DBB & DIB DESIGN:**

Per request DBB, DIB-I or DIB-II seat design is available based on work conditions.



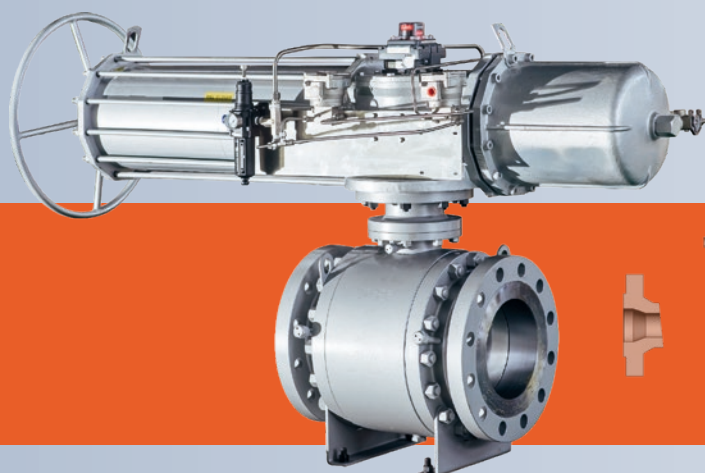
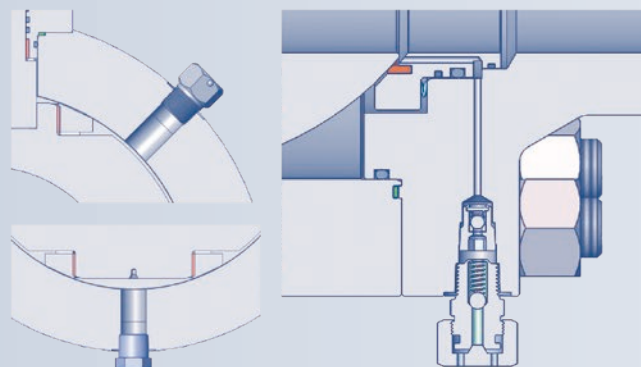
## **METAL TO METAL SEATED DESIGN:**

Metal-seated ball/seats and high performance graphite sets are available in complex conditions such as high temperature, high pressure and particle medium, etc.



## **VENT / DRAIN / EMERGEN INJECTION GREASE:**

Drain and vent are standard feature in ball valve to ensure pressure relief and cavity drain, Sealant injection systems located on the stem and seat can be utilized in case of emergencies. A second internal check valve provides back up to the fitting.





# E.P.&S.

## Reliable Valve Automation Solutions

E.P.&S. bring to you engineered flow control solutions for Oil & gas, Power & process industries. The **MT Group** valves are unique for their reliability, constant performance and low torque requirements which remain steady with no fluctuations when automated with actuators over a period of sustained usage ensuring drop-tight shutoff in critical operating conditions. E.P.&S. leverages its manufacturers inhouse capabilities in system design, manufacture, integration and testing to offer a comprehensive range of Valve Automation Solutions that go beyond industry standards and surpass customer expectations.

### The Valve Automation solutions include:

- Emergency Shut Down Valves (ESDV)
- Shut Down Valves (SDV)
- Blowdown Valves (BDV)
- On / Off Valves
- Remote Operated Valves
- Motor-operated Valves

The Emergency Shutdown / Blow Down Valves (ESDV / SDV / BDV) are built on Quarter-turn (Ball & Butterfly) and Linear (Gate & Globe) Valves.

### ESDV Features include:

- Fast closing / opening - operating time less than 2 seconds
- Fail-safe configuration (Open / Close / Stay-put)
- Redundancy - 1oo2 / 2oo3 for Solenoid Valve
- Partial Stroke Test (PST) facility
- Open / Close Position Indicator

### Options:

- Fire-proof system (Fusible Plug, Fire box, Jacketing or Coating)
- ESD via Momentary / Pulse signal
- Instruments mounted on IP cabinet box
- Local Control Station (LCS) with customized local operating function
- Manual open / close
- Back-up Air Volume Tank
- Pneumatic ESD control without electric source



E.P.&S. engineers can size the valve you require, then working with one of our many partners, we can select an automation facility to fit actuators and accessories and undertake torque testing and hydrostatic and pneumatic testing all in-house.

# E.P.&S.

## Automated Valve Automation Solutions



<ul style="list-style-type: none"><li><input type="checkbox"/> Solenoid Valves</li><li><input type="checkbox"/> Limit Switches</li><li><input type="checkbox"/> Positioners</li><li><input type="checkbox"/> Air Filter Regulators</li><li>+ Quick Exhaust Valves</li><li>+ Volume Boosters</li><li>+ Local Control Stations (LCS)</li></ul>	<ul style="list-style-type: none"><li><input type="checkbox"/> Ball Valves<ul style="list-style-type: none"><li>Floating / Trunnion Mounted</li></ul></li><li><input type="checkbox"/> Butterfly Valves</li><li><input type="checkbox"/> Gate Valves</li><li><input type="checkbox"/> Globe Valves</li></ul>	<ul style="list-style-type: none"><li><input type="checkbox"/> Pneumatic Actuators</li><li><input type="checkbox"/> Hydraulic / Electro-hydraulic Actuators</li><li><input type="checkbox"/> Electrical Actuators</li><li><input type="checkbox"/> Gas-over-Oil Actuators</li></ul>
<b>Solenoid Valves:</b> <ul style="list-style-type: none"><li>• 3/2-way and 5/2-way</li><li>• Auto and Manual Reset / Class F or H coil</li><li>• De-Energize: Open / De-Energize: Close</li><li>• Operating power: AC / DC Supply</li><li>• Body MOC: Brass / Al / SS</li></ul>	<b>Ball Valves - Floating / Trunnion Mounted:</b> <ul style="list-style-type: none"><li>• Operating Time: Less than 2 seconds</li><li>• API 6D, Fire-safe API 6FA / API 607 / ISO 10497</li><li>• Leakage Class: ISO 5208, Rate A (Soft-seated)</li><li>• Leakage Class: ISO 5208, Rate B (Metalseated)</li><li>• Fugitive Emission: ISO 15848 Class B / A</li><li>• Options: Double-piston Effect</li><li>• Size: up to 60", Class 150 to 2500</li></ul>	<b>Pneumatic Actuators:</b> <ul style="list-style-type: none"><li>• Linear / Rotary</li><li>• Rack-and-Pinion / Scotch Yoke</li><li>• Piston type - Single-acting / Double-acting</li><li>• Fast acting with cushioning arrangement</li><li>• Certification: SIL / PED</li></ul>
<b>Limit Switches:</b> <ul style="list-style-type: none"><li>• Micro / Proximity Switch</li><li>• SPDT / DPDT / Non-contact type</li><li>• Protection: Hermetically-sealed</li><li>• Extended open / close indication (optional)</li><li>• Operating power: AC / DC Supply</li><li>• Enclosure MOC: Al / SS</li></ul>	<b>Butterfly Valves:</b> <ul style="list-style-type: none"><li>• Operating Time: Less than 5 seconds</li><li>• API Monogram, Fire-safe API 607 / ISO 10497</li><li>• Leakage Class: API 598 Resilient Seated</li><li>• Fugitive Emission: ISO 15848 Class B / A</li><li>• Size: up to 60", Class 150 to 600</li></ul>	<b>Hydraulic / Electro-hydraulic Actuators:</b> <ul style="list-style-type: none"><li>• Linear / Rotary</li><li>• Scotch Yoke / Rack-and-Pinion (Hydraulic only)</li><li>• Piston type – Single-acting / Double-acting</li><li>• Electrical failsafe</li><li>• With External Hydraulic Power pack</li></ul>
<b>Positioners:</b> <ul style="list-style-type: none"><li>• Partial Stroke Test</li><li>• Electro-pneumatic / SMART (HART / FF)</li><li>• Advance Diagnostics with Software</li><li>• Operating power: 24V DC / 4-20mA</li><li>• Enclosure MOC: Al / SS</li></ul>	<b>Gate Valves:</b> <ul style="list-style-type: none"><li>• Operating Time: 1 second / inch</li><li>• API 600 / ASME B16.34, ISO 10497</li><li>• Leakage Class: API 598 / MSS SP-61</li><li>• Fugitive Emission: ISO 15848 Class B</li><li>• Size: 1/2" to 72", Class 150 to 2500</li></ul>	<b>Electrical Actuators:</b> <ul style="list-style-type: none"><li>• Linear / Rotary</li><li>• Intrusive &amp; Non-intrusive</li><li>• On-Off / Inching / Modulating Duty</li><li>• Integral or Non-integral Starter</li><li>• Electrical fail-safe</li><li>• Communication: Hardwire / Modbus / Profibus / FF</li></ul>
<b>Air Filter Regulators:</b> <ul style="list-style-type: none"><li>• Manual / Auto Reset</li><li>• Filter Element: Sintered Bronze / Polycarbonate / Polyethylene / SS</li><li>• Body MOC: Aluminum / Stainless Steel</li><li>• Filter Element Size: 5µ / 25µ / 40µ</li><li>• Inlet &amp; Outlet Pressure Gauge</li></ul>	<b>Globe Valves:</b> <ul style="list-style-type: none"><li>• Actuation options: Pneumatic, Electric</li><li>• API 6D / ISO 14313, ISO 10497</li><li>• Leakage Class: ISO 5208, Rate A (Softseated)</li><li>• Fugitive Emission: ISO 15848 Class B</li><li>• Size: 2" to 24", Class 150 to 2500</li></ul>	<b>Gas-over-Oil Actuators:</b> <ul style="list-style-type: none"><li>• Pipeline gas used as power source</li><li>• Linear / Rotary</li><li>• Scotch Yoke</li><li>• Piston type - Double-acting</li><li>• Electrical failsafe</li></ul>



# MT Group Ball Valves

## TRUNNION MOUNTED BALL VALVES

**Pressure Rating:**

Class 150 - 300 - 600 - 900 - 1500 - 2500

**Design Standard:**

API 6D

**Maxsize:**

NPS 60"

**Design Structure:**

Side Entry / Top Entry, Soft Seat / Metal Seat / O-ring Seal /  
Lipseal, DBB, DIB-1, DIB-2, Casting Steel / Forged Steel



## FLOATING BALL VALVES

**Pressure Rating:**

Class 150 - 300 - 600 - 900 - 1500 - 2500

**Design Standard:**

ISO 17292, API 608, ASME B16.34

**Maxsize:**

NPS 10"

**Design Structure:**

Side Entry / Top Entry, Soft Seat / Metal Seat, Casting Steel /  
Forged Steel



## DBB DOUBLE BALL VALVES

**Pressure Rating:**

Class 150 - 300 - 600 - 900 - 1500 - 2500

**Maxsize:**

NPS 24"

**Design Structure:**

Double ball, compact design, DBB



E.P.&S. can provide your choice of actuator brand or select from one of our partners range of ex-stock brands. We also designs and supply failsafe systems, control panels etc. We perform all fitting, instrumentation, and testing (function/ stroke, open & close speed, functionalities, etc).



# E.P.&S. | MT Group

## Overview of all Products

### GATE VALVES

Wedge Gate Valves  
#150 - 2500lb

Parallel Slide Gate Valves  
#300 - 2500lb

Pressure Seal Gate valves  
#600 - 2500lb

Through Conduit Gate valves  
#150 - 900lb

Cryogenic Gate Valves  
#150 - 2500lb

Main Design  
API 600 / API 602 /  
API 603 / API 6D /  
ASME B16.34 / MSS SP144

Maximum Size: 60"



### GLOBE VALVES

Globe Valves  
#150 - 2500lb

Stop-Check Globe Valves  
#150 - 2500lb

Pressure Seal Globe Valves  
#600 - 2500lb

Cryogenic Globe Valves  
#150 - 2500lb

Main Design  
API 602 / BS 1873 /  
API 623 / ASME B16.34 /  
MSS SP144

Maximum Size: 20"



### CHECK VALVES

Swing Check Valves  
#150 - 2500lb

Lift Type Check Valves  
#150 - 600lb

Pressure Seal Bonnet  
Check Valves  
#600 - 2500lb

Cryogenic Check Valves  
#150 - 2500lb

Main Design  
API 602 / API 594 / BS1868 /  
ASME B16.34 / MSS SP144

Maximum Size: 48"



### AXIAL CHECK VALVES

Axial Check Valves  
#150 - 2500lb

Cryogenic Axial  
Check Valves  
#150 - 600lb

Main Design: API 6D

Maximum Size: 48"



### DUAL PLATE CHECK VALVES

Dual plate Check Valves  
#150 - 2500lb  
Wafer / Lug / Double flange /  
Hub end Soft or metal seat

Cryogenic Dual plate  
Check Valves  
#150 - 300 lb

Main Design  
API 594/API 6D

Maximum Size: 72"





## BALL VALVES

### Trunnion Mounted Ball Valves

#150 - 2500lb

Side Entry / Top Entry, Soft Seat / Metal Seat, O-ring Seal / Lipseal, Double Block & Bleed, Cast / Forged options

### Fully Welded Trunnion Mounted Ball Valves

#150 - 1500lb

Fully Welded Body, Side Entry, Soft Seat / Metal Seat, O-ring Seal, Double Block & Bleed, Underground Installation

### DBB Ball Valves

#150 - 2500lb

Modular Body, Compact Design, Double Block & Bleed

### Ball Valves

#150 - 2500lb

### Cryogenic Ball Valves

#150 - 1500lb

-50°C~196°C, Side Entry / Top Entry, Soft Seat, Forged Steel

### Main Design

API 6D/ISO 17292

Maximum Size: 48"



## BUTTERFLY VALVES

### Double Offset Butterfly Valves

#150 - 600lb

Wafer / Lug / Double Flange / Bi-directional Sealing

### Triple Offset Butterfly Valves

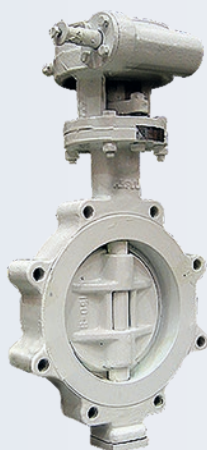
#150 - 600lb

Wafer / Lug / Double Flange

### Main Design

API 609

Maximum Size: 48"



## PLUG VALVES

### Lubricated Plug Valves

#150 - 600lb

Pressure Balance

### Sleeved Plug Valves

#150 - 600lb

Soft Seat, Self-lubricated

### Main Design

API 599/API 6D

Maximum Size: 24"



## SAFETY VALVES

### Pressure Class

150 - 300 - 600 - 900 - 1500 - 2500

### Operation Temperature

-196°C~538°C

### Main Design

ASME VIII

Maximum Size: 8"

### Material

Carbon Steel, Stainless Steel, Special Material per client requirement



Our own extensive stocks combined with our short delivery manufacturing supply base enables to E.P.&S. to provide all requirements from standard on-off valves to bespoke valve/actuator packages. We can provide tailored procurement solutions ranging from one-off's to large scale projects.

 **ENGINEERED  
PRODUCTS  
& SERVICES** **E.P.&S.**  
**Your Valve Specialist**



# E.P.&S. | MT Group

*Other References*

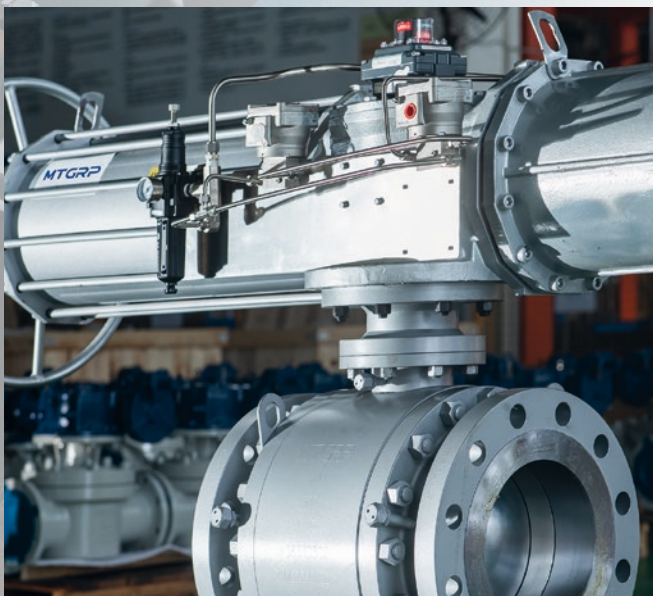


◀ 12" Full Bore ESDV  
Hydraulically Actuated  
Pressure Class #1500  
Body Material: Forged  
Stainless Steel (A182 F316)  
Trim Material: Stainless Steel  
Fast track delivery: 4 weeks

 ENGINEERED  
PRODUCTS  
& SERVICES **E.P.&S.**  
**Your Valve Specialist**







## REFERENCES

ACTEMIUM Cameroon, Congo - ADDAX Cameroon, Gabon - ASSALA Gabon - ATLANTIC METHANOL Equatorial Guinea - BP Angola  
BW OFFSHORE Gabon - CHEVRON Angola - CORAF Congo - CSS Senegal - EGLNG Equatorial Guinea - ENI Congo - EXXON Angola, Cameroon,  
Equatorial Guinea, Tchad - FOXTROT Ivory Coast - GEPSING Equatorial Guinea - ICS Senegal - MARATHON Equatorial Guinea - MAUREL & PROM  
Gabon - MODEC Ghana, Ivory Coast - OPS Angola - PALMOR Cameroon - PERENCO Cameroon, Congo, DR Congo, Gabon PETROCI Ivory Coast  
PUMA Ghana - SAIPEM Congo - SAR Senegal - SCCI Ivory Coast - SIPH Group - SIR Ivory Coast - SOGARA Gabon - SOMAIR Niger - SOMDIAA  
Group - SONANGOL Angola - SONARA Cameroon - SPIE Congo, Gabon - STEVE MARCUS Nigeria - SUCRIVOIRE Ivory Coast - TAQA Ghana  
TOR Ghana - TOTAL Angola, Congo, Gabon - TRIDENT Brazil, Equatorial Guinea - VOLTA RIVER AUTHORITY Ghana - YOKOGAWA Angola



# Your Valve Specialist

Leading Brands • **FAST TRACK** • Competitive Prices

**CONTROL VALVES**  
Customized, Fast Track (4 weeks),  
Replacement Parts

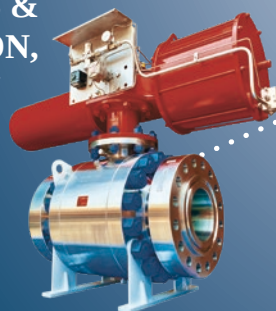
**CHOKE VALVES**  
Customized, Fast Track (4 weeks),  
Replacement Parts

**BALL VALVES**  
Wide Stock,  
Premium Quality, API6D,  
European or US standards

**API6A**  
Wellhead Valves  
and Solutions



**ACTUATORS & AUTOMATION,**  
**SDV, ESDV**  
Spare Parts,  
Customized,  
Fast track,  
Control Panels



**GATE  
GLOBE  
CHECK  
VALVES**  
Wide Stock,  
Premium Quality,  
API6D, European  
or US standards

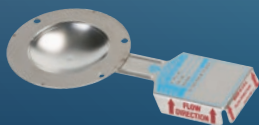


**BUTTERFLY  
VALVES**  
Wide Stock,  
Premium Quality,  
API6D,  
European or US  
standards



## OTHER PRODUCT RANGES

**RUPTURE DISCS**  
Customized,  
World Leader,  
Safety



**TANK PROTECTION**  
No Risk for your  
Critical Assets



**PRESSURE  
SAFETY VALVES**  
Customized, Fast Track,  
Like for Like  
Replacement,  
Package



**REGULATORS**  
Air, Liquid, Gas,  
Customized,  
Like for Like  
Replacement



**SOV & VALVES  
ACCESSORIES**  
Like for Like Replacement,  
Atex Explosion proof,  
Offshore specification  
available



CARRARO

COMPENSA

GROTH  
CORPORATION

KSB

amri

MASTER FLO

MT GROUP

NEWAY  
NOE

ROTEX

**Our locations in Africa**  
**SENEGAL** Saly  
**ANGOLA** Luanda  
**CAMEROON** Douala

**GSM/WhatsApp**  
+221 782 930 378  
+244 947 887 380  
+237 652 127 095

ventes@fr-eps.com  
logistique@fr-eps.com  
[www.fr-eps.com](http://www.fr-eps.com)



ENGINEERED  
PRODUCTS  
& SERVICES

**E.P.&S.**