

# Your Valve Specialist

Leading Brands • **FAST TRACK** • Competitive Prices

## CONTROL VALVES

Customized, Fast Track (4 weeks),  
Replacement Parts



## CHOKE VALVES

Customized, Fast Track (4 weeks),  
Replacement Parts



## PRESSURE SAFETY VALVES

Customized, Fast Track, Like for Like  
Replacement, Package



## BALL VALVES

Wide Stock,  
Premium Quality,  
API6D,  
European or US standards



## GATE GLOBE CHECK VALVES

Wide Stock,  
Premium Quality,  
API6D, European  
or US standards



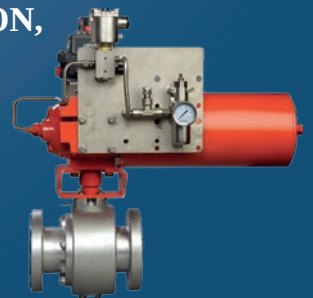
## BUTTERFLY VALVES

Wide Stock,  
Premium Quality, API6D,  
European or US standards



## ACTUATORS & AUTOMATION, SDV, ESDV

Spare Parts,  
Customized,  
Fast track,  
Control Panels



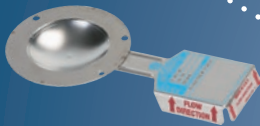
## API6A

Wellhead Valves and Solutions



## RUPTURE DISCS

Customized, World Leader,  
Safety



## TANK PROTECTION

No Risk for your  
Critical Assets



## CONDITION MONITORING

Avoid Unplanned  
Shutdown



## REGULATORS

Air, Liquid, Gas, Customized,  
Like for Like Replacement



**Baker Hughes**  
Masonellian Consolidated  
Bentley Nevada  
Mooney Regulators  
Becker Control Valves

**GROTH CORPORATION**  
A Continental Disc company

**Continental Disc Corporation**

**NEWAY NOC**  
A NEWAY COMPANY  
**MASTER FLO**

**KSB amri**

**Our locations in Africa**  
ANGOLA Luanda  
CAMEROON Douala  
SENEGAL Dakar

**GSM/WhatsApp**  
+237 672 70 50 50  
+221 782 930 378  
+33 (0) 650 590 965

ventes@fr-eps.com  
logistique@fr-eps.com  
www.fr-eps.com

**ENGINEERED PRODUCTS & SERVICES**  
**E.P.&S.**